

B-series

Automotive Borescope



Visit www.z-checkcorp.com for more info.

Industrial Endoscope
Series

Introduction:

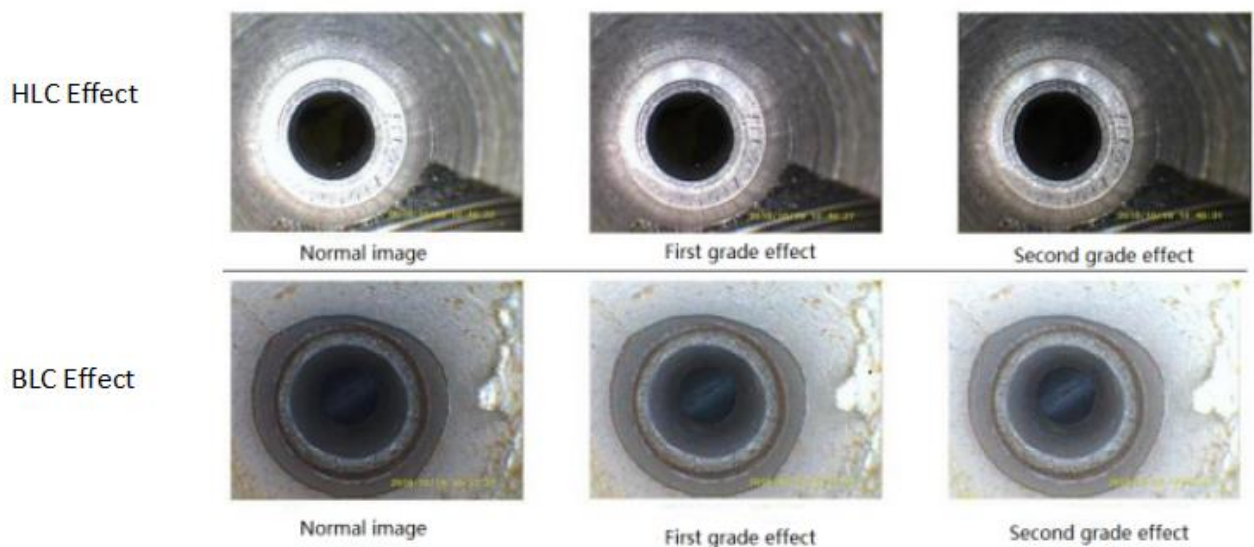
B series portable endoscope is a professional detection instrument developed for maintenance, diagnosis and maintenance. The resolution of high-definition images of 800*480 ensures a good image restoration effect. Simple and humanized operation, compact and playful appearance make it not only a necessary tool for quick and visual inspection by professionals in the auto repair industry, but also the first choice to satisfy every car lover who CARES about their health.

Technical Advantage:

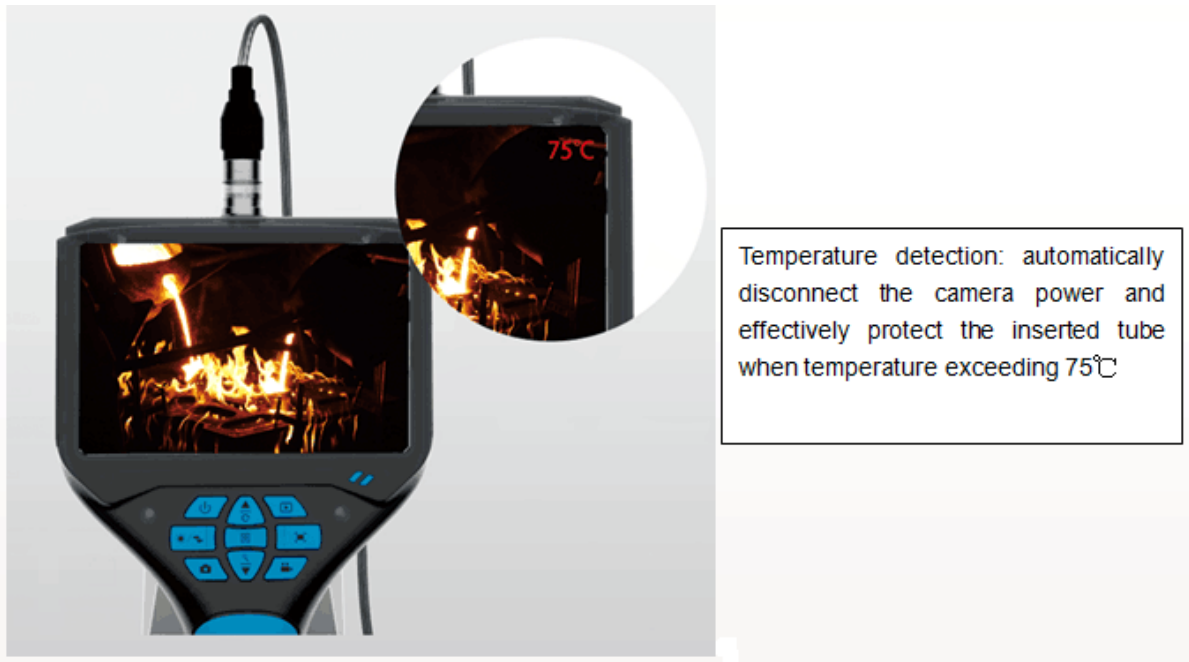
- ◆ Unique function of strong light inhibition and weak light compensation;

High light compensation (HLC): It can effectively inhibit the reflection of light source and improve the solution of metal detection;

Back light compensation(BLC): in the weak light environment, it can see more dark details by the exposure algorithm to improve the image brightness;

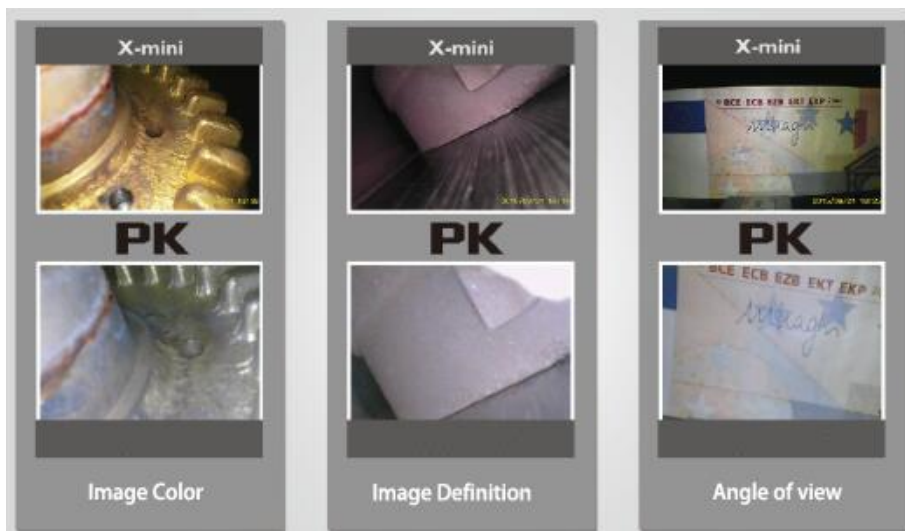


- ◆ Unique environmental temperature detection function of 6mm dual camera, which detects the environmental temperature exceeding 75°C and will automatically disconnect the camera power and effectively protect the inserted tube;



- ◆ Adopt 4.3 inch IPS wide viewing angle screen:

800*480 resolution with unique image processing technology, the picture quality is exquisite and clear; IPS wide viewing angle screen: True color representation, no reflection at any Angle, high brightness, to cope with severe industrial testing environment;



- ◆ Optional diameter probe tube meet different testing requirement:
Visit www.yateks.com for more info.

4.5mm lens with rigid tube;

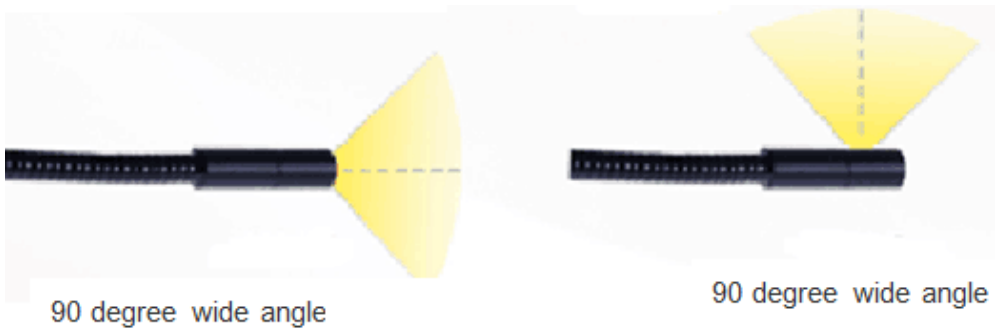
5.5mm lens with rigid tube;

6mm dual lens with rigid tube;

9mm dual lens with rigid tube.



- ◆ Front and side view dual camera with omnidirectional detection;



- ◆ Rotatable image with freeze and 4times magnification function;
- ◆ Collecting all digital and lossless video data completely;



- ◆ Strictly in accordance with ISO9001 quality system standard, approved CE, RoHS , product quality stable and reliable

Specification:

Display	4.3 inch IPS wide viewing angle screen
White Balance	AWB
Function	Photography, video, brightness control, image zoom, image freeze, image locking and image flip
Internal storage	TF card (maximum32GB)
Data I/O port	SD card interface, TV out, USB interface
Brightness Control	3 degree brightness adjustment
Battery	18650 lithium batteries(replaceable)
Standby time	≥6h
File management	Support image and video play, delete, format and naming
Image format	JEPG(record the date and time)
Video format	AVI (record the date and time)
Signal Output	PAL&NTSC
Language	Chinese, English, Spanish, French, German, Russian, Japanese
Probe dimension	3.7mm,4.5mm,5.5mm,6mm,9mm
Insertion tube length	1-5m
Insertion tube type	Flexible tube, rigid tube
Insertion tube material	Rigid tube material: 301 stainless steel + PE
	Flexible tube material: Carbon steel + galvanized iron + PE
Resolution	450,000 pixels
DOF	10mm~100mm; 5-50mm
Angle of view	90°
System work temperature	-10°C~50°C
Probe work temperature	-10°C~60°C
Waterproof grade	Probe IP67 / Monitor IP54

Application:

B series borescope can be widely applied to detect and diagnose wear and carbon blockage of engine, cylinder, oil pressure components, fuel pipe, muffler, conveyance and air conditioning system, differential, water tank, oil tank, gear box, pipe, etc.



Piston and spark plug carbon



The inside flaw of the exhaust pipe

B series models

Model No	Insertion tube type	Description						
		Diameter [mm]	Insertion Tube Length [m]	Camera	Optic		Light	
				Resolution	Depth of Field	Angle of View	Type	[Lux]
B310FM	Flexible	3.7	1	640*480	10-100mm	80°	LED	5,000
B320FM			2					
B330FM			3					
B350FM			5					
B410FM	Rigid	4.5	1	640*480	10-100mm	90°	LED	5,000
B420FM			2					
B430FM			3					
B450FM			5					
B510FM	Rigid with thread	5.5	1	640*480	10-100mm	90°	LED	5,000
B520FM			2					
B530FM			3					
B550FM			5					
B610DM	Rigid with temperature warn protect function	6	1	640*480	F10-100m m/ S5-50mm	90°	LED	F6,000/ S4,000
B620DM			2					
B630DM			3					
B650DM			5					
B910DM	Rigid	9	1	640*480	F10-100m m/ S5-50mm	90°	LED	F4,000/ S8,000
B920DM			2					
B930DM			3					
B950DM			5					

Z-CHECK
CORPORATION

35560 Grand River Ave, #420
Farmington Hills, MI 48335
P: 248-676-1007 / E: sales@z-checkcorp.com
Website: www.z-checkcorp.com