

# P series 3D Measurement Industrial Video Endoscope



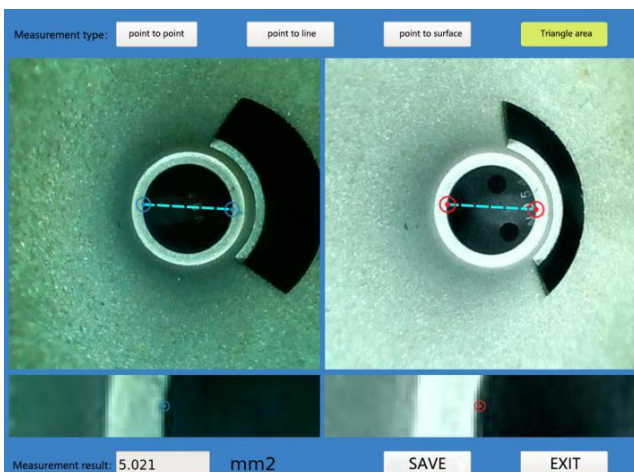
## Introduction:

Yateks 3D measurement Industrial Endoscope perfectly combines the 3D measurement technology with Endoscope technology. It is a portable and multi-functional integrated endoscope that integrates all the cutting-edge technology and functions, including 3D measurement, unique handle design, 360° arbitrary articulation, data collection and access, brightness adjustment etc., which can meet different needs of maintenance personnel to work in limited space and harsh environments ideally.

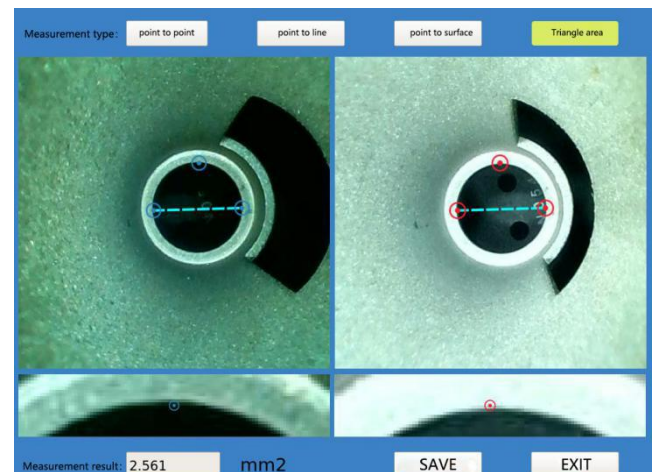
This P-Series features a brilliant, integrated LED for easily adjustable lighting to capture photos and videos in a variety of environments possible. The great CMOS sensor provides a very clear and high rendition image.

## Technical Features:

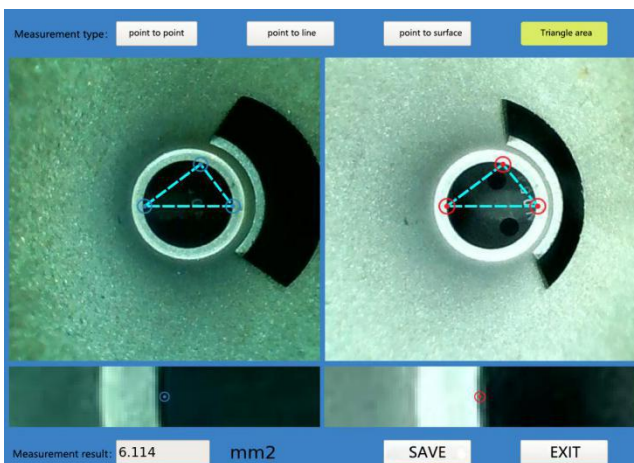
1. The 3D measurement system can accurately measure the size of defects through point-to-point, point-to-line, point-to-surface, area measurement etc.;



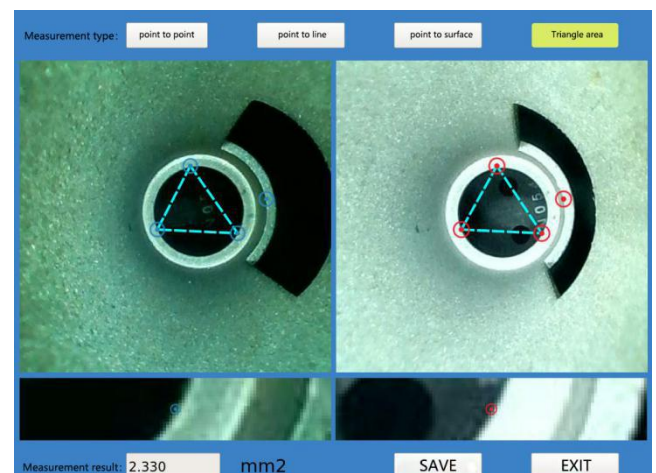
**point -to-point**



**point-to-line**



**point -to-surface**



**area measurement**

2. Automatic locking and precise positioning;



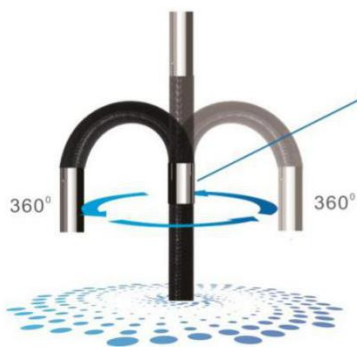
**Locking automatically and fixed position memory**

Holding on for 3 seconds to lock when probe bent; Open fixed position memory function after locking. Probe will bend around locking point when the rocker is operated again.

**Electromagnetic rocker control structure**

Probe bends arbitrarily for 360°,so flexible that a controller can easily control probe with one thumb.

3. 4-way 360° articulation with stepping function;



**Electronic magnetic rocker which can adjust omnidirectionally for 360°**

Step by step rocker controlling system provides precise camera location.



4. Built-in four color modes



original



high rendition



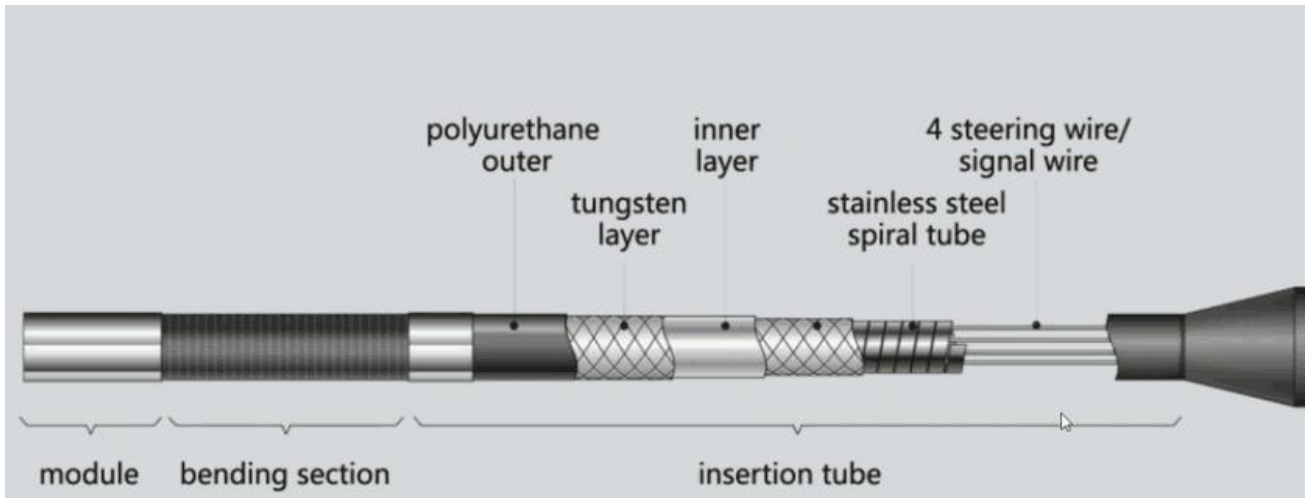
short distance



long distance



5. The insertion tube is braided with four layers of tungsten wire, wear-resistant, anti-corrosion, and IP67 protection level;



6. The operating handle can be replaced at will, and a host can be equipped with multiple handles to meet different application requirements



7. Having a number of invention patents;

Patents Nr.	Patents description
ZL 201110024752.8	Endoscope bending control structure
ZL 201110070182.6	Endoscope steering control mechanism



ZL 201110069782.0	Endoscope fine-tuning device
ZL 201110092627.0	Endoscope system and measurement method using the endoscope system
ZL 201310242888.5	Endoscope bending control mechanism and endoscope
ZL 201310243007.1	Endoscope power input mechanism and endoscope
ZL 201510540062.6	Endoscope

## Other features:

- 8-inch industrial touch screen, simple and easy to operate;
- A special humanized support mechanism is set behind the host, no need to hold the host all the time during use;
- The host and the scope are connected by quick intubation, and the maximum separation distance between the handle and the host can reach 2 meters, which is more adaptable on site;
- Mini USB, large-capacity SD card, VGA interface (can be connected to a large-screen display), easy for multiple people to analyze together;

## Application Industry:

Aerospace, Aircraft Maintenance & Manufacturing, Airfoil / Turbine Blade Castings, Automotive / Truck Manufacturing



## Specifications:

	Category	Description	
System	Dimension/Weight	246*321*123mm/2.3KG	
	Display screen	8" IPS industrial HD touch LCD screen with resolution 1024*768(ratio 4:3)	
	3D measurement	Point to point, point to line, point to surface, triangle area	
	Control lever	Electric rocker with lens able to rotate in 360-degree,automatic set, direction fine tuning adjustable	
	Functions	Photography, video, brightness control, locking and fine tuning	
	Storage	32G high speed SD card (UP TO 128G)	
	I/O port	SD card, HDMI port (1024*768) ,charge and mini USB	
	Battery/Standby time	4*18650 Lithium batteries(replaceable)	
	Brightness control	5 degrees each for high and low brightness adjustment,10 degrees in total	
	Combining form	Monitor + probe Separable group	
	Compatibility	Support different diameter probes	
	Software	Operation system	Real time multitasking operation system
		User interface	Touch screen operation menu
File management		Support image and video play, delete, format memo and naming	
Image control		Zoom in/out(1.0X-1.5X,5 steps),playback, picture freeze-frame, image reversal, mirror image	
Image format/Video format		JPEG,JPG/AVI(record date and time)	
Language		English/Chinese/Korean/German/Russian/Japanese	
Color settings		4 modes for different applications	
White balance		Automatic/manual white balance	
Exposure mode		Automatic/manual/shutter/aperture exposure	

	Upgrade	Upgrade by SD card service pack
Operating environment	Monitor working temperature	-10~50°
	video probe working temperature	-20~70°
	Relative humidity	Highest 90%,no condensation
	Waterproof	Monitor IP54/video probe IP67

## Models for option:

Model	Part No	Description										
		Diameter [mm]	Insertion Tube Length [m]	Camera				Optic		Light		Probe Bending
				Location	Head Type	CMOS Sensor	Resolution	Depth of Field	Angle of View	Type	[Lux]	
<b>P610BM</b>	13267010	<b>6</b>	<b>1</b>	<b>Front</b>	<b>BM</b>	<b>OC</b>	<b>800*800</b>	<b>5-100mm</b>	<b>120°</b>	<b>Fiber</b>	<b>100,000</b>	<b>130±10°</b>
<b>P620BM</b>	13267020		<b>2</b>									<b>120±10°</b>