

SPECTROLINE[®]

OPTIMAX™ 365

(Patent Pending)

Our Most Powerful and Versatile UV-A LED Flashlight!

APPLICATIONS:

- **Nondestructive Testing (NDT)**
- **Quality Control**
- **Fluorescent Leak Detection**
- **Industrial Inspection**
- **UV-A Curing**
- **Photoactivation and UV-A Dosing**
- **Rare Document/Stamp/Artwork Examination**
- **And many more!**

Powerful — Ultra-high intensity up to 50,000 μ W/cm² of true UV-A (365 nm).

Instant-on Operation — Push the button and the lamp immediately reaches full power and is ready for use. Eliminates down time waiting for bulbs to warm up.

Portable & Rugged — Cordless. Use it anywhere! Stands up to heavy use in the field, shop or laboratory. Anodized aluminum lamp body minimizes corrosion.

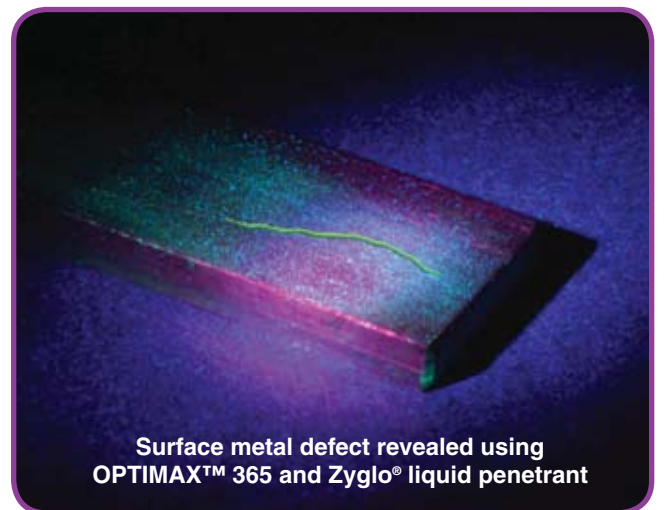
Rechargeable — Powered by a rechargeable NiMH battery. Provides 90 minutes of continuous inspection between charges (AC and DC chargers included).

Long Life — 30,000-hour LED bulb. Electronic Intensity Stabilizer ensures consistent performance. Beam strength will not fade between charges!

Versatile — Meets MIL and ASTM specs for FPI and MPI.



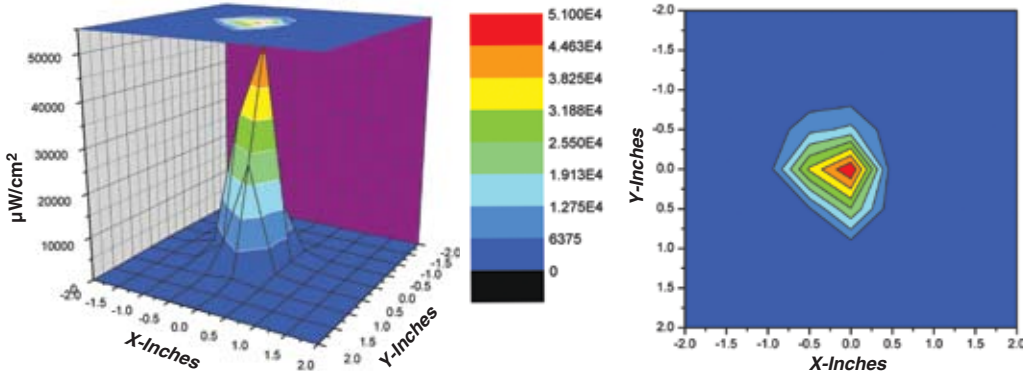
The **OPTIMAX™ 365** comes complete with smart AC and DC chargers, UV-absorbing spectacles, belt holster and padded carrying case. AC charger available in 120V, 230V, 240V or 100V versions.



Surface metal defect revealed using
OPTIMAX™ 365 and Zyglo® liquid penetrant

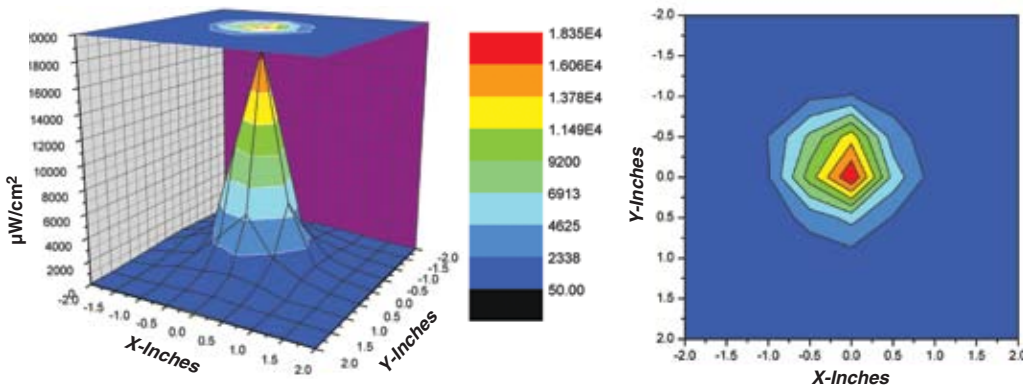
OPTIMAX™ 365 High-Intensity, Versatile, True UV-A LED Flashlight

The cordless **OPTIMAX™ 365** is ergonomic, compact and lightweight. It's designed to provide ultimate freedom of movement during inspections. With an ultra-high intensity up to 50,000 $\mu\text{W}/\text{cm}^2$, it's our most powerful true UV-A (365 nm) LED flashlight.



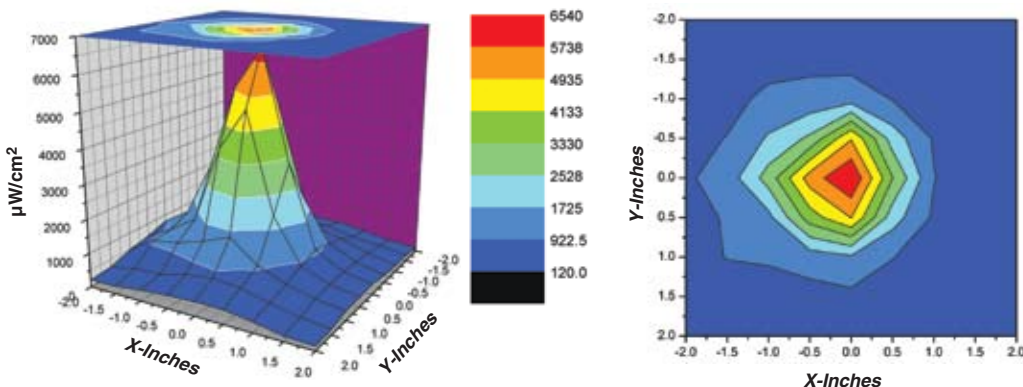
SURFACE CONTOUR PROFILE AT 6 IN (15 CM)

TOP INTENSITY PROFILE AT 6 IN (15 CM)



SURFACE CONTOUR PROFILE AT 15 IN (38 CM)

TOP INTENSITY PROFILE AT 15 IN (38 CM)



SURFACE CONTOUR PROFILE AT 24 IN (61 CM)

TOP INTENSITY PROFILE AT 24 IN (61 CM)

KEY FEATURES

- Electronic Intensity Stabilizer
- Very low visible light emission: under 2 foot-candles (20 Lux)
- 30,000-hour LED bulb life
- Battery strength indicator light
- Charge status indicator light
- Corrosion-resistant, anodized aluminum lamp body
- Rechargeable NiMH battery

SPECIFICATIONS

Product Number

OPX-365*

Lamp Style

Cordless LED Flashlight

Lamp Head Diameter

2 in (5.1 cm)

Length

8 in (20.3 cm)

Weight (with battery)

11.8 oz (335 g)

Power Requirement

3.6V, 2AH NiMH internal battery stick (rechargeable)

Run Time

90 minutes (continuous)

Charge Time

4 hours

Nominal Steady-State UV-A Intensity:

6" (15 cm)—50,000 $\mu\text{W}/\text{cm}^2$

15" (38 cm)—18,000 $\mu\text{W}/\text{cm}^2$

24" (61 cm)—6,000 $\mu\text{W}/\text{cm}^2$

* Model **OPX-365C** also available for curing applications.

Nominal Steady-State UV-A Intensity:

6" (15 cm)—60,000 $\mu\text{W}/\text{cm}^2$

NOTE: All readings taken with a Spectroline® AccuMAX™ Series meter.



SPECTRONICS CORPORATION

956 Brush Hollow Road, P.O. Box 483
Westbury, New York 11590
800-274-8888 • 516-333-4840
Fax: 800-491-6868 • 516-333-4859
www.spectroline.com

DISTRIBUTED BY:

Z-CHECK CORPORATION

35560 Grand River Ave, #420
Farmington Hills, MI 48335
P: 248-676-1007 / E: sales@z-checkcorp.com
Website: www.z-checkcorp.com

4/08 A08023
PRINTED IN U.S.A.