

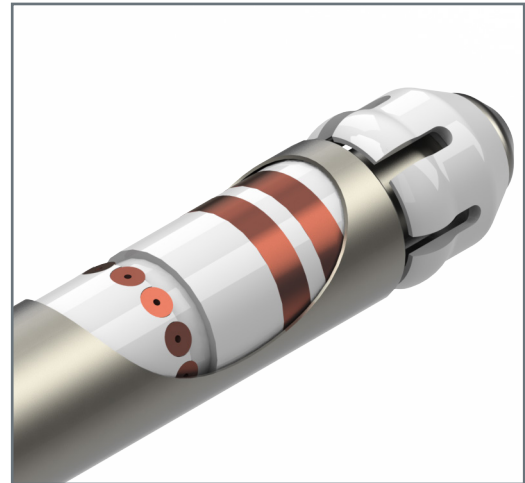
CXB Probe Family

Detect Both Axial and Circumferential Tube Defects

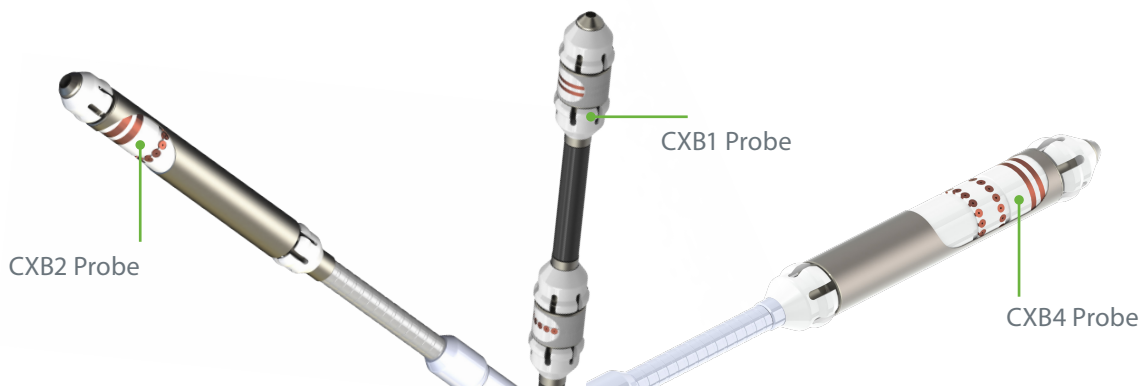
Zetec is the leader in array coil technology. Our patent on reusing transmit and receive coils allows us to create a better coverage per coil density than anyone else in the industry. When you use Zetec CXB probes, you'll gather all of the necessary data in "one pass" through the tube, resulting in significant inspection procedure cost savings. CXB probes are designed to find circumferential cracks and other indications in heat exchangers. Two technologies, array and bobbin, are integrated into a single probe for shorter inspections and fewer probe changes.

FEATURES & BENEFITS

- ▶ **Proprietary X-Probe™ Technology**
Multiple bracelets of pancake coils in a dense pattern. Delivers high-speed, high-quality inspection
- ▶ **Circumferential Crack Detection**
Circumferential array coils
- ▶ **Axial Crack Detection**
General purpose differential bobbin coils
- ▶ **Inspect Both U-bend and Straight Tubing**
Flexible probe head bends 10" for minimum U-bend radius (CXB1)
- ▶ **Flexible Centering Feet**
Provides accurate and consistent measurements throughout the tube
- ▶ **Easy System Configuration**
MiZID programmed identification and authentication device



CXB2 probe magnified



CXB Probe Family

Detect Both Axial and Circumferential Tube Defects

CXB1	PROBE DIAMETERS	PUSH POLY LENGTH	PUSH POLY TYPE	FREQUENCY RANGE	CONNECTOR
	.330" (8.38mm) to 1.150" (29.21mm) in 0.010" increments	50' (15.2m) 83' (25.3m) 110' (33.5m)	5/16T (Thin wall) 3/8T (Thin wall)	Multiple ranges available	36 Pin
<i>Custom options are available for all items</i>					
CXB2	PROBE DIAMETERS	PUSH POLY LENGTH	PUSH POLY TYPE	FREQUENCY RANGE	CONNECTOR
	.450" (11.43mm) to 1.150" (29.21mm) in 0.010" increments	50' (15.2m) 83' (25.3m) 110' (33.5m)	5/16T (Thin wall) 3/8T (Thin wall)	Multiple ranges available	36 Pin
<i>Custom options are available for all items</i>					
CXB4	PROBE DIAMETERS	PUSH POLY LENGTH	PUSH POLY TYPE	FREQUENCY RANGE	CONNECTOR
	.450" (11.43mm) to .900" (22.86mm) in 0.010" increments	50' (15.2m) 83' (25.3m) 110' (33.5m)	5/16T (Thin wall) 3/8T (Thin wall)	Multiple ranges available	36 Pin
<i>Custom options are available for all items</i>					

CXB Probe Options

- ▶ CXB1 - Designed for u-bend inspection
- ▶ CXB2 - Features a titanium sleeve and centering feet for straight tubing
- ▶ CXB3 - A CXB2 with stainless steel scrapers and no centering feet
- ▶ CXB4 - An X-Probe in a CXB body for straight tubes
- ▶ CXB5 - A low row CXB for tight radius bends. No bobbin coils or centering feet

General Specifications

- ▶ Shipping Dimensions (typical): 20.5" x 21"x2.2" (52.1mm x 53.3mm x 5.6mm)
- ▶ Shipping Weight: < 6 lbs. (2.7kg)
- ▶ Operational Temperature: 40°F to 113°F (4°C to 45°C)
- ▶ Recommended Storage Temperature: 55°F to 75°F (13°C to 24°C)

Recommended Zetec Instruments and Software

- ▶ MIZ-200 High Performance Eddy Current Instrument
- ▶ MIZ-85ID Modular Tubing Eddy Current Instrument
- ▶ High Speed 3D Probe Pusher
- ▶ Velocity PC Software
- ▶ EddyNet/AQ Software

Zetec: The Largest Supplier of Probes Worldwide

For nearly 50 years, Zetec has manufactured over 10,000 probe designs to meet the changing needs of the nondestructive testing (NDT) market. We are the leading supplier of probes worldwide covering most applications and techniques. With world-class manufacturing facilities, Zetec probes deliver the best results for our customers.



Zetec holds ISO 9001 and ISO/IEC 17025 certifications

Zetec, Inc
8226 Bracken Pl. SE | Suite 100
Snoqualmie WA 98065
Toll Free: 800.643.1771
P: 425-974-2700

