

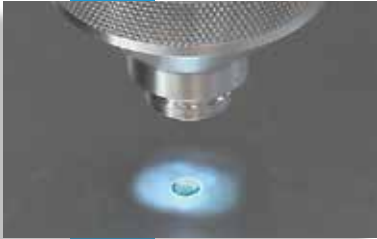


BRINELL SCOPES **HiLIGHT**[™]

Casting a New Light
on Accurate Brinell Testing

Advanced 20x LED Brinell Microscope
Designed for Optimal Illumination of Brinell Indentations

Advanced Simplicity



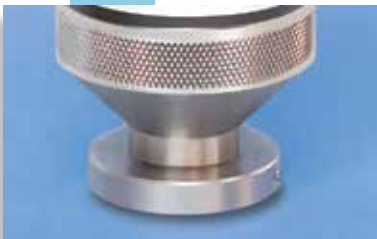
Built-in LEDs for Optimum Illumination of Test Impression— And Better Accuracy

The new LED system directs the light at a shallow angle for optimum, consistent illumination of the impression. No awkward flashlight attachment.



Simple, Efficient Power-on Controls

The HiLight turns on and off with a quick twist of the base. The scope can also turn on automatically with the optional Motion Sensor/Timer Control. The scope will stay on for two minutes before shutting off; and will operate for over 200 hours on just one battery.



Removable Base for 5/8" Footprint

The removable, snap-on base can be used for improved stability during testing, and can be removed for use in tight locations.



Convenient Storage Options

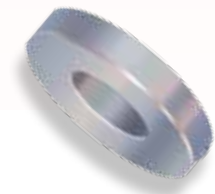
Both a cradle and tether are available to safely secure and protect the HiLight when not in use.

A New and Innovative Line of LED-Illuminated Brinell Scopes

Newage Testing Instruments has a different approach to Brinell scope construction in its new HiLight Brinell Scope. The HiLight Series uses built-in, high-efficiency LEDs (light-emitting diodes) to illuminate Brinell impressions. The LEDs are ideally positioned to provide an even and consistent definition of the Brinell impression's image.

To illuminate impressions, traditional Brinell scopes use a flashlight attachment which shines in through an opening in the side of the scope. The operator often moves the angle of the illumination up and down to "pick" a view of the impression to measure, and thereby introduces more variation into the measurement process. The HiLight Brinell scopes are completely enclosed, so no ambient light reaches the test impression—the source of the light is the built-in LEDs. Optimized surface illumination with a sharp 20X magnification helps insure more reliable results, whether measuring Brinell impressions or other applications such as total case depth on heat treated samples.

In addition to the illumination advantages offered by the LEDs, the HiLight scopes have improved durability and greater efficiency, with up to 200 hours continuous operation without replacing the battery. The scope can be used with the snap-on base, so that it stands upright by itself, providing a stable platform for making measurements. Or, the base can be removed for measurements with a narrow 5/8" footprint.



Ordering

LED Illuminated Brinell Scopes

5620-05 . . . HiLight Brinell Scope

20X power. 7 mm long scale with 0.05 mm graduations on the reticle.

5620-01 . . . HiLight Brinell Scope

20X power. Integral micrometer for 0.01 mm measurement resolution.

Dimensions . . . Diameter: 2" (51 mm); Height: 6" (152 mm)

Footprint With removable foot: 1.5" (38 mm); Without removable foot: 5/8" (16 mm)

HiLight Brinell Scope Accessories

5620-05A Automatic On-Off Power Control

Motion sensor timer control.

5621 Snap-Tite Scope Cradle

Cradle with mounting holes and clips.

05-106 Scope Tether

To mount HiLight Brinell Scope securely above the work surface.

Contact us for other components available at time of sale.

HiLight is a trademark of AMETEK, Inc.



35560 Grand River Ave, #420
Farmington Hills, MI 48335
P: 248-676-1007 / E: sales@z-checkcorp.com
Website: www.z-checkcorp.com

 Conform to relevant EU standards and is CE marked.